

Installation and Operating Manual for Components

HST[®]-S1

Switching element
(Translation of Original Manual)

HST-S1 Ident.-No.: 10222

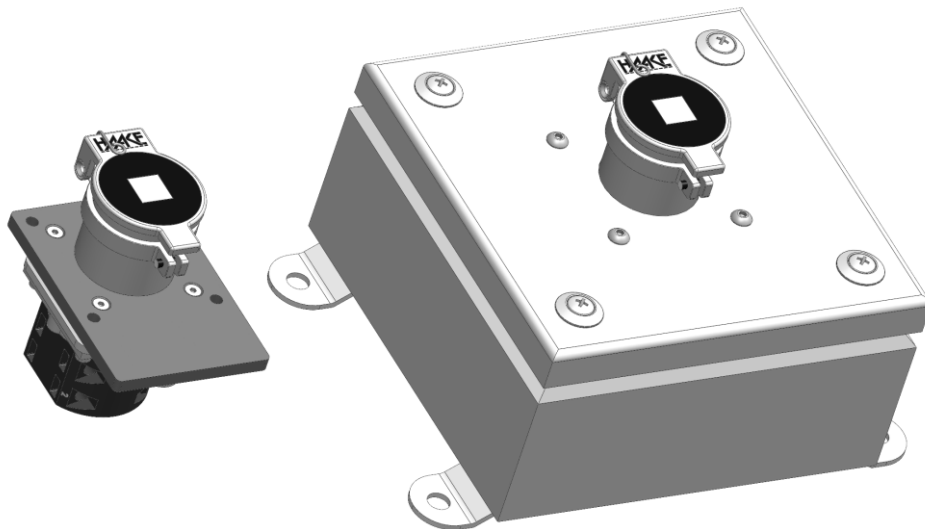
HST-S1 Ident.-No.: 10228

HST-S1 Ident.-No.: 10223

HST-S1 Ident.-No.: 10229

HST-S1 Ident.-No.: 10224

HST-S1 Ident.-No.: 10230



HST-S1, pictured Ident.-No.: 10222 and 10228
The image may differ from the product.

Read the operating manual before beginning any work!

HAAKE[®]



Doc-ID. 411961

Haake Technik GmbH
Master Esch 72
48691 Vreden, Deutschland
info@haake-technik.com
www.haake-technik.com
Tel.: +49 2564 39650
Fax: +49 2564 396590

This installation and operating manual contains proprietary information, which is subject to copyright. No parts of this documentation may be reproduced or transferred in any manner or by any means, be it electronic or mechanical, for any purpose without obtaining prior written consent.

Haake Technik GmbH assumes no liability for damage or subsequent damage, arising from the use of components or replacement parts, which are not original parts.

Haake and HST are registered trademarks of Haake Technik GmbH. All other brand and product names not mentioned here are or may be registered trademarks and are to be treated accordingly.

© Haake Technik GmbH, Master Esch 72, 48691 Vreden, Germany

All rights reserved.

Contents

1	Scope.....	3
2	Intended use.....	3
3	Symbol Explanation.....	3
4	Disposal.....	3
5	Foreseeable misuse.....	4
6	Identification.....	4
7	Safety-related functioning.....	4
8	Defects which cannot occur.....	5
9	Scope of delivery.....	6
10	Structure and function.....	6
11	Safety measures.....	7
11.1	Organisational measures.....	7
11.2	Safety of persons.....	7
11.3	Operating conditions and limitations of use.....	7
11.4	Assembly.....	7
11.5	Repairs / Alterations.....	7
11.6	Electrical equipment.....	7
12	Installation.....	8
12.1	Preparation.....	8
12.2	General approach.....	8
12.3	Installation instructions for HST-S1 inbuilt version (10222, 10223 und 10224).....	9
12.4	Installation instructions for HST-S1 housing version.....	10
12.5	Electrical connection.....	11
13	Performance check.....	11
14	Operation.....	12
14.1	Inserting the key.....	12
14.2	Removing the key.....	12
15	Maintenance.....	12
16	Cleaning.....	13
17	De-installation.....	13
17.1	De-installation instructions for HST-S1: inbuilt version (10222, 10223 und 10224).....	13
17.2	De-installation instructions for HST-S1: housing version (10228, 10229 und 10230).....	13
18	Troubleshooting.....	14
19	Technical Data.....	15
20	Dimensions.....	16
21	EC Declaration of Conformity.....	19

1 Scope

This installation and operating manual is intended for persons who have been authorized to carry out tasks involving the installation or operation of the HST-series.

International, national and, where appropriate, regional regulations are to be observed when handling key transfer systems.

If you have any questions which are not answered in this manual, please get in touch with your regional customer service centre or else make direct contact with

Haake Technik GmbH

Master Esch 72, 48691 Vreden, Germany

Telephone +49 2564 39650

Fax +49 2564 396590

Info@haake-technik.com

2 Intended use

The Switching element with locking mechanism HST-S1 is used to switch off the power supply to the load circuits of machines or plants without shutoff delays, with rated currents up to 20A(see technical sheet of the switch), in accordance with the conditions of section 19.

Other applications are prohibited.

3 Symbol Explanation

Warnings are indicated by symbols. The notices are introduced by signal words to indicate the extent of the hazard.



Attention!

... indicates a potentially hazardous situation, which may lead to personal injury and damage to property if it is not avoided.



NOTE!

... highlights useful tips and recommendations as well as information for efficient and fault-free operation.

4 Disposal



The device must be properly disposed of in accordance with national laws and regulations.

5 Foreseeable misuse

Never operate the keys with extended lever arms. This can damage the internal components and may render the safety function inoperative.

Do not attempt to unlock the component with objects other than the corresponding keys.

Do not attempt to insert or remove a key by applying excessive force or with the aid of a tool (hammer)



Attention!

Safe entrance through the HST-S1 into the danger area can not be guaranteed on machines or systems with an overrun.

6 Identification

You can find the model designation and serial number on the component's type label for exact identification.

If the component is part of a key transfer system, this information, except for the serial number, can also be found on the key plan.

Note these details (prior to installation, if necessary), so that they can be provided in case of questions or for ordering spare parts.

7 Safety-related functioning

The safety-related function is performed according to the following requirements:

- 1.No removal of the switch key in position 1 (cf. section 10).
- 2.No actuation of the switch without inserted, associated, coded switch key.

8 Defects which cannot occur

Due to the construction, materials, and components used for the component, the faults listed in the table can be excluded:

Potential Defect	Elimination of Defect	Limitations of Use	Reason
Wear, corrosion.	Permissible acc. To tables A.4 and A.5 of DIN EN ISO 13849-2.	See sections 2 Intended use and sections 19 Technical data.	Application of carefully selected materials and manufacturing processes; use of proven springs and special mounting methods.
Non-tightening /Loosening (parts of the component).	Permissible acc. To tables A.4 and A.5 of DIN EN ISO 13849-2.	See section 2 Intended use.	Application of carefully selected materials and manufacturing processes; use of proven springs and special mounting methods.
Weakening of force due to remaining deformation or fracture.	Permissible acc. To table A.5 of DIN EN ISO 13849-2.	See section 14 Operation.	Use of proven spring and special mounting methods.
Fracture, deformation due to excessive load.	Permissible acc. To tables A.4 and A.5 of DIN EN ISO 13849-2.	See section 14 Operation.	Application of carefully selected materials; over dimensioning using safety factor 2 and replication of parts; use of proven springs and special mounting methods.
Stiffness/Getting stuck.	Permissible acc. To tables A.4 and A.5 of DIN EN ISO 13849-2.	See sections 2 Intended use and sections 14 Operation.	Application of carefully selected materials; over dimensioning using safety factor 2 and replication of parts; use of proven springs and special mounting methods.
Contacts do not open.	Switches with contacts open in accordance with EN 60947-3.	See: Technical information for the switch.	Approved switch in accordance with DIN EN ISO 13849-2.
Bypass of adjacent circuits, which are isolated from each other.	Bypass for switch can be excluded in accordance with EN 60947-3.	See: Technical information for the switch.	Approved switch in accordance with DIN EN ISO 13849-2.

9 Scope of delivery

1 x switch element HST-S1 incl. drilling template or set for wall mounting.
1 x technical information for the inbuilt switch.



NOTE!

Means of attachment and properly coded keys are **not** included in the scope of delivery.

10 Structure and function

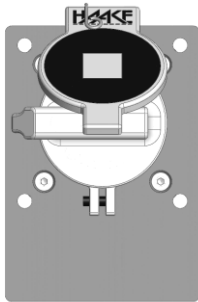
The switching element HST-S1 consists of a lock and a switch, which form a positive unit. The Switching element serves to disconnect the energy supply, which can create a hazard (e.g.: a dangerous movement).

In version HST-S1 identification no.: 10228, 10229 and 10230, the switching element is mounted in housing. Identification no.: 10222, 10223 and 10224 is an built-in version.

The switch can only be actuated by changing from position 0 to 1 or vice versa.

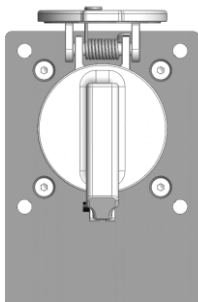
If the power supply to a machine or plant is interrupted with the HST-S1 and the switch key for the transfer to other HST system components is available, the rotary switch must be connected so that, by changing from position 1 to position 0, the circuit to the drive unit of the machine or plant is opened.

Please see the accompanying switch documentation for the contact pairing of the built-in switch.



Position 1

Switch key cannot be removed.



Position 0

Switch key can be removed.

Figure shows HST-S1 Ident.-No.: 10222

11 Safety measures

11.1 Organisational measures

Persons who have been authorised to carry out tasks involving the installation or removal of the component must have read and understood this manual prior to commencing such tasks.

The operator of the plant or machine has an obligation to ensure the installation and de-installation is carried out safely and with no hazards by implementing appropriate safety measures.

11.2 Safety of persons

Personnel responsible for installation or removal tasks have to be suitably skilled or else have to be instructed by suitably skilled persons. On account of their technical training and experience, such skilled persons have sufficient knowledge of the installation or machine. These persons are sufficiently familiar with the applicable domestic work protection and accident prevention regulations of relevance here, that they are able to assess the operational safety of the installation or machine.

It is necessary to implement accident- and fall-prevention measures, whenever tasks are performed or areas are traversed at height.

11.3 Operating conditions and limitations of use

Please note the **intended use** (cf. section 2) and the **technical information** (cf. section 19) described in this manual.

11.4 Assembly

Before beginning installation, ensure that the component is intended and suitable for the particular installation site, based on the information on the type label. Always carry out a function test after installation.

Do not make any alterations to the installation after the function test has been successfully carried out.

11.5 Repairs / Alterations

Do not carry out any repairs to the component. Do not replace or exchange any parts. Send damaged or faulty components to Haake Technik GmbH to be repaired.

Do not make any alterations to the component. Otherwise, this could lead to malfunctions, which can cause serious personal injury and irreparable damage to property.

In the event of non-compliance, the guarantee is invalidated and Haake Technik GmbH does not accept any liability.

11.6 Electrical equipment

Electrical connections must only be carried out by qualified electricians who are familiar with all the international, national, and, if applicable, regional electrical engineering regulations.

Work must only be carried out when the power supply has been shut off.

12 Installation



Attention!

When installing the component, choose a means of attachment that cannot easily be detached (e.g. riveting or safety screws).

12.1 Preparation

Before beginning installation, ensure that the identification number given in this installation and operation manual corresponds to the identification number of the component.

Installing the component requires the following items that are **not** included in the scope of delivery:

- HST-S1: inbuilt version (10222, 10223 und 10224)
4 screws + M4 nuts from A2-70
- HST-S1: housing version (10228, 10229 und 10230)
4 screws + up to max. M6 nuts from A2-70 is required
- Screw locking devices (toothed lock washers, disc springs, shaft washers, or screw adhesive)

Clean the work environment by removing dirt, grease and oil.

12.2 General approach

Use suitable tools when installing the component. Otherwise, bolts and nuts may become damaged and unusable.

When tightening the screws listed in section 12.1, do not exceed the max. tightening torque. Use the items listed in section 12.1 to secure the screw connections.

12.3 Installation instructions for HST-S1 inbuilt version (10222, 10223 und 10224)

Make the mounting holes according to the design of the component. The mounting holes should be arranged as shown in the diagrams (cf. section 20: **Dimensions**) and the drilling template.

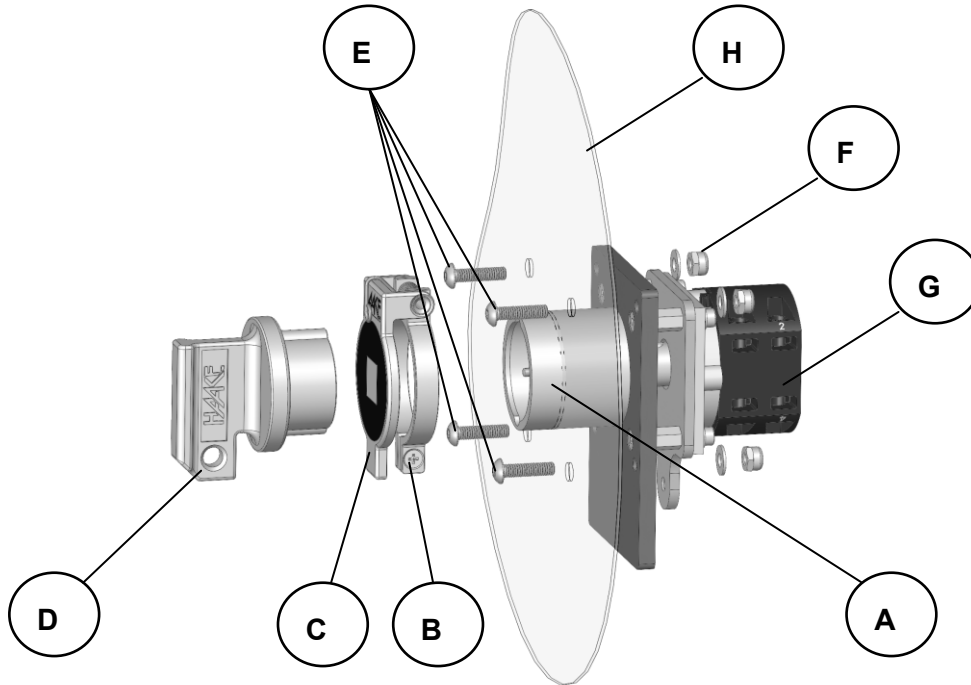


Illustration of HST-S1 Ident.-No.: 10222

Assembly group			
A	Lock	B	M3 screw
C	Protective dust cover	D	Switch key
E	M4 screws	F	Nut and plate for M4
G	Switch	H	Control panel or machine housing

- If necessary, remove the switch key [D] and remove the protective dust cover [C] after unscrewing the M3 screws [B] from the lock [A].
- Pass the HST-S1 from behind through the mounting holes in the control panel or machine housing [H].
- Attach the HST-S1 with 4 sufficiently long M5 screws [E] and matching nuts [F].
- Secure the screw connection against coming loose.
- Carry out the electrical connection (cf. section 12.5)
- Reattach the protective dust cover [C] to the lock [A]. When doing so, make sure that the protective dust cover sits flush on the lock [A] when the switch key is removed.

No liability is accepted in the event of improper installation!

12.4 Installation instructions for HST-S1 housing version

Make the mounting holes according to the design of the component. The mounting holes should be arranged as shown in the diagrams (cf. section 20: **Dimensions**).

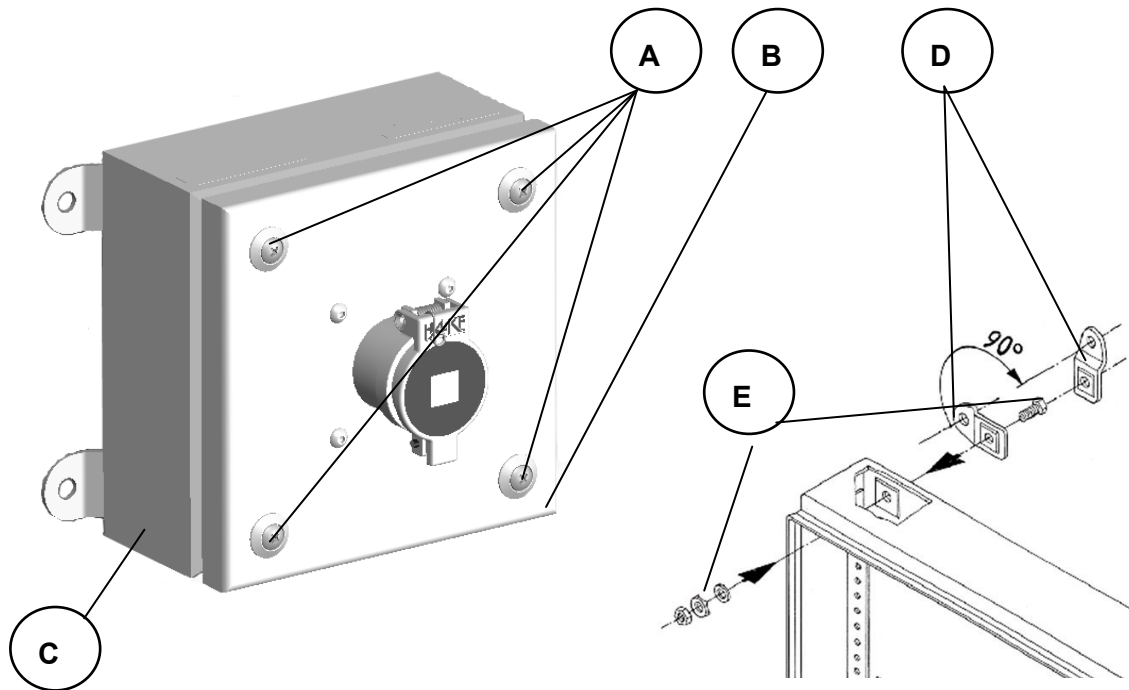


Illustration of HST-S1 Ident.-No.: 10228

Assembly group			
A	Lid screws	B	Housing lid
C	Housing box	D	Wall mounting
E	Screws and nuts		

- Open the housing box [C] by unscrewing the 4 outer lid screws [A] of the housing box [C] and lift the housing lid [B] from the housing box [C] with the HST-S1. Make sure the protective earthing conductors are not damaged. Securing the housing lid [B] against falling down.
- Mount the enclosed wall mounting [D] according to the illustration.
- Attach the housing box [C] with suitable screws and nuts if necessary.
- Secure the screw connection against coming loose.
- Taking the conditions on site into account, create a hole to thread the cables into the housing box [B] insert a suitable cable gland with a protection class of at least IP 65 (**not** included in scope of delivery).
- Carry out the electrical connection (cf. section 12.5).
- Place the housing lid [B] back on the housing box [C] with the HST-S1 and screw it in place with the 4 lid screws [A]. Make sure the protective earthing conductors are not squashed or disconnected.



Attention!

Make sure the protective earthing conductor is not squashed or disconnected.

No liability is accepted in the event of improper installation!

12.5 Electrical connection



Attention!

The protective earthing conductor must always be connected as first head!

The electrical connection for the switch must occur according to the instructions in the attached documents for the built-in switch.

No liability is accepted in the event of improper installation!

13 Performance check



Attention!

The protective effectiveness of the component is to be checked regularly within the scope of and in accordance with the German Ordinance on Industrial Safety and Health (Betriebssicherheitsverordnung).

Once installed, do not loosen any bolts or nuts or remove any pins; otherwise, the effectiveness of the safety-related functions is no longer guaranteed.

Once finished with installation tasks, carry out the following inspections:

- Check all bolted connections for tightness and ensure that the bolts cannot come loose by themselves.
- Check whether the component is stuck.
- Check whether all keys can be inserted and turned easily.
- Check whether the safety-relevant functions (cf. section 7) are ensured.
- Check whether all electrical connections, especially the protective earthing conductor, the correct assignment tight fit and proper execution.
- Turn the switch key check the switching ON and OFF functions.
- Record the results of performance check.

14 Operation



Attention!

Never operate the key with extended lever arms. This may destroy the inner components and disable the safety function.

Do not attempt to unlock the component with objects other than the corresponding keys.

Do not ever attempt to insert or remove a key by applying excessive force or with the aid of a tool (hammer).

14.1 Inserting the key

- Insert the switch key (position 0) and turn it to position 1 (cf. section 10).

14.2 Removing the key

- Turn the switch key from position 1 to position 0 (cf. section 10).
- Remove the key.

15 Maintenance



Attention!

Adapt the frequency of checks to the environmental conditions at the application site.

No maintenance of the internal parts of the component is required.

We recommend the following maintenance measures:

- Check the component at regular intervals (at least once a year) for external damage.
- Check the protective dust cover is securely in place and the seal is functioning.

Damaged or faulty devices must be replaced.

16 Cleaning

No cleaning is required, as a rule.



Attention!

In dusty environments (e.g. cement dust, colour dust), only clean the component with compressed air.

Only use other cleaning methods after prior consultation with the manufacturer.

17 De-installation



Attention!

Only uninstall the component when power to the electrical system is switched off.

Loosen the attachment of the HST-S1 depending on the version.

17.1 De-installation instructions for HST-S1: inbuilt version (10222, 10223 und 10224)

- If necessary, remove the switch key and remove the protective dust cover after unscrewing the M3 screws from the lock.
- Disconnect the electrical connection (cf. section 12.5).
- Detach the HST-S1 with the M4 screws chosen by you and the matching nuts.
- Remove the HST-S1.
- We recommend reattaching the protective dust cover to the lock. When doing so, make sure that the protective dust cover sits flush on the lock when the switch key is removed.

17.2 De-installation instructions for HST-S1: housing version (10228, 10229 und 10230)

- Open the housing box by unscrewing the 4 outer lid screws of the housing box and lift the housing lid from the housing box with the HST-S1. Make sure the protective earthing conductors are not damaged. Securing the housing lid against falling down
- Disconnect the electrical connection and cable gland (cf. section 12.5).
- Detach the housing box with the screws chosen by you.
- We recommend replacing the lid on the housing box with the HST-S1 and screwing it in place with the 4 lid screws. Make sure the protective earthing conductors are not squashed or disconnected.

18 Troubleshooting

Fault	Possible cause	Remedy
The key cannot be inserted/ turned.	Wrong key / wrong coding.	Check labelling on the key and on the component.
	Deformed key.	Check key. Contact Haake Technik GmbH in case of de- formation.
	Key inserted incorrectly.	Remove the key and if neces- sary insert it rotated 180°.
	Mechanical fault.	Contact Haake Technik GmbH
Lock can only be operated with difficulty.	Mechanism is stiff.	Clean (cf. section 16) If necessary contact Haake Technik GmbH.
Safety-relevant function (cf. section 7) not fulfilled.		Contact Haake Technik GmbH.
	Faulty electrical connections.	Check the electrical connec- tions.
You cannot remove the key.	Mechanical fault.	Contact Haake Technik GmbH.
	Faulty electrical connections.	Check the electrical connec- tions.
	Switch key not in Position 0.	Turn the switch key to the stop and remove.
Lost key.		Contact Haake Technik GmbH.

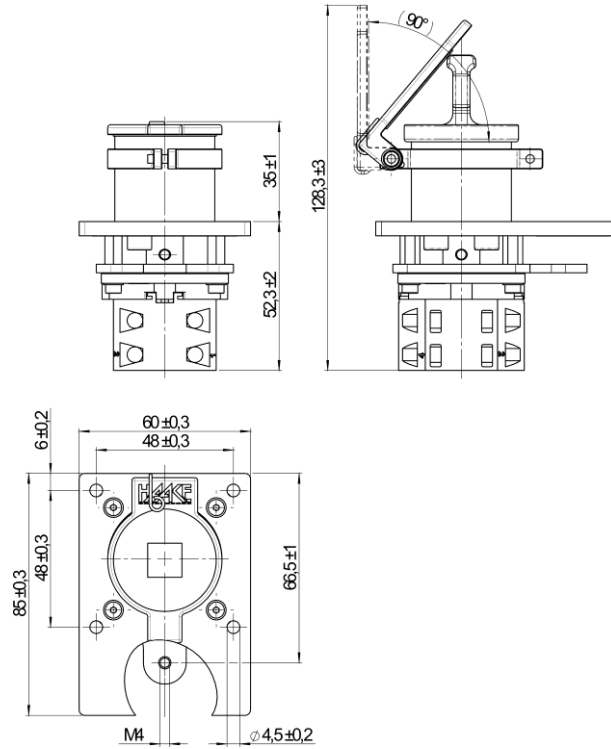
19 Technical Data

Environment:	Indoor / outdoor
Temperature range:	
Inbuilt version (Ident-No. 10222, 10223 , 10224):	-25 °C to +40 °C
Housing version (Ident-No. 10228, 10229, 10230):	-25 °C to +40 °C
Humidity:	to 100% (standard climate)
Material:	
Lock:	stainless steel
Inbuilt version:	Mounting plate: galvanised steel Earthing plate: galvanised steel
Housing:	powder-coated sheet steel
Ambient atmosphere:	industrial environments
Mounting position:	all positions
Mechanical service life:	
Lock :	280.000 actuations
Switch :	1.000.000 actuations
Service life:	15 years
B10 _d - values:	
Switch; rated operating current 16/20 A:	36.000 switching operations
Switch: for 24 V DC and 0, 21 A:	1.000.000 (in conjunction with PNOZ X3)
Mean Time To Failure (MTTF _d):	Application-dependant
Protection class:	
Housing version (Ident-No. 10228,10229,10230):	IP 65
Inbuilt version (Ident-Nr. 10222,10223,10224):	IP 2x
Reference standard for rotary switch:	EN 60947-3
Technical information for the inbuilt switch:	see switch documentation

20 Dimensions

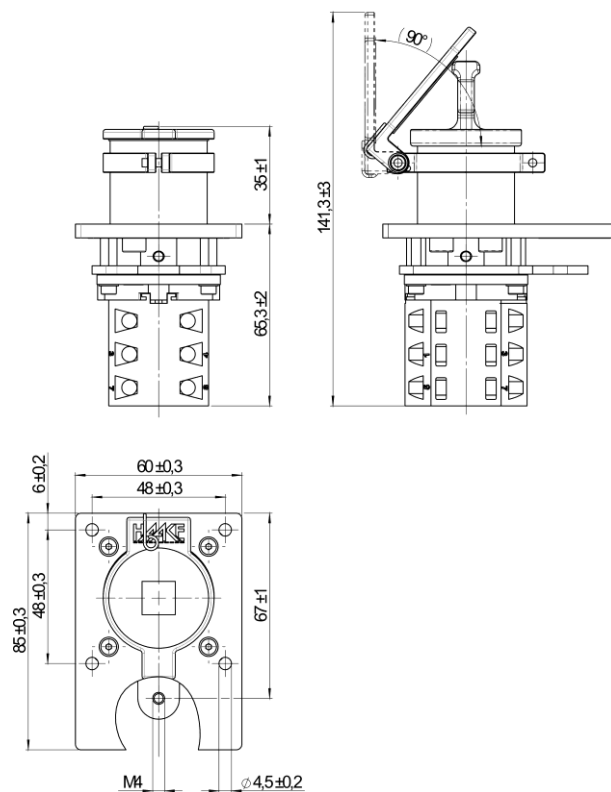
Dimensional specifications in mm.
HST-S1 Ident.-No.: 10222

Description:
The key cannot be retracted.
Key not included.



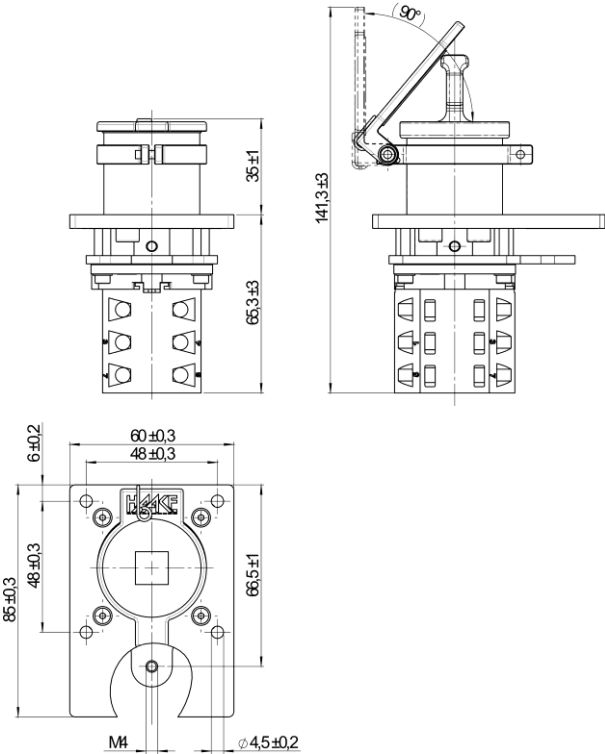
HST-S1 Ident.-No: 10223

Description:
The key cannot be retracted.
Key not included.

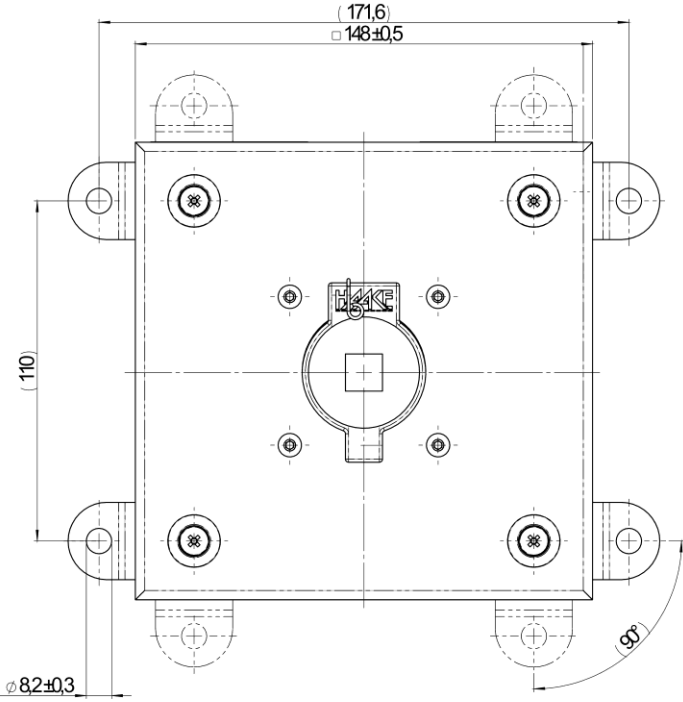
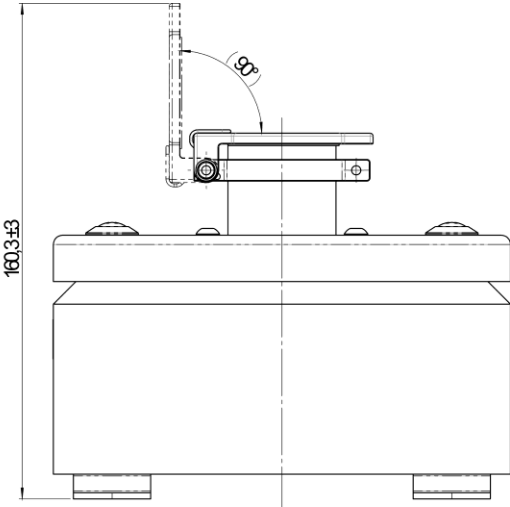
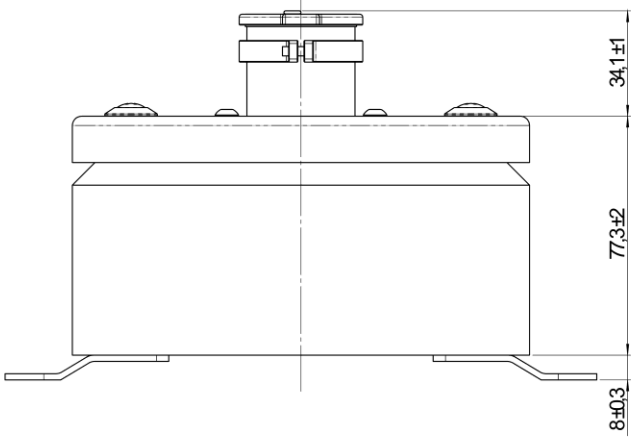


HST-S1 Ident.-No: 10224

Description:
The key cannot be retracted.
Key not included.



HST-S1 Ident.-No: 10228, 10229, 10230:



EC Declaration of Conformity
in accordance with EC Directive 2006/42/EC Annex II 1. A

The company: **Haake Technik GmbH**
Master Esch 72
48691 Vreden

hereby declares that
the safety components: **Switching element**

Type: **HST-S1**

Serial Number: **see information on the product**

in the delivered version is in accordance with the following relevant regulations:

EC Directives: **Directive on machinery 2006/42/EC**

Test Specification: **GS-ET 31**
Principles of testing and certification for
Interlocking devices with key transfer systems

The HST-S1 switching element allows interrupting the supply of energy for machines or equipment without run-down time at rated currents of up to 20 A.

Our quality assurance system ensures that all safety components are manufactured with the same quality.
Therefore the Declaration of Conformity issued applies for all safety components of the above types produced from serial number 1130450.

Authorized representative to compile the technical documentation is:

HAAKE Technik GmbH
Herr Jens Schoppen
Master Esch 72
48691 Vreden

Vreden, 07.12.2012


André Haake
(General Manager)

HAAKE Technik GmbH; Master Esch 72; 48691 Vreden
Phone: (02564) 39650 Fax: (02564) 396590

EG-Konformitätserklärung HST-S1, EN, ha, Rev. B, 07.12.2012.doc



Haake Technik GmbH
Master Esch 72
48691 Vreden, Germany
info@haake-technik.com
www.haake-technik.com
Tel.: +49 2564 39650
Fax: +49 2564 396590